

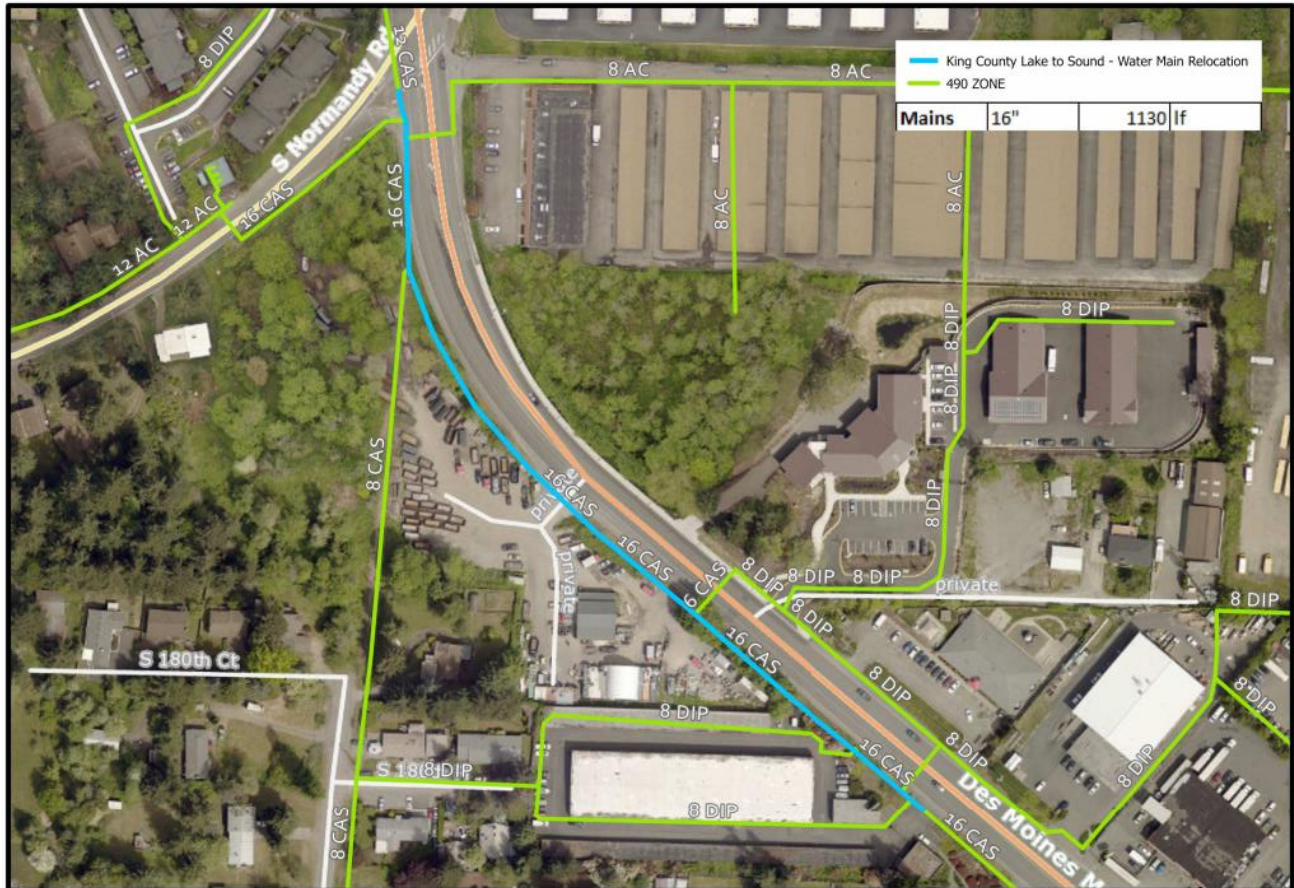
***Project 22-1 King County Lake to Sound Trail Relocation***

King County, in partnership with the cities of Burien and SeaTac, plans to construct a new trail from S 200<sup>th</sup> St to S Normandy Road and Des Moines Memorial Drive. The trail will connect the Des Moines Creek trail to the regional trail network operated by King County.

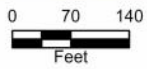
In early 2021, the District received notice by the City of Burien to relocate an approximately 1,200 LF of existing 16-inch cast iron water main in conflict with several retaining walls. The proximity of the main prevents the excavation to form the wall foundations.

The District retained Parametrix, the same consultant who is designing the trail, to facilitate design of the relocation. The work will be a bid schedule on the County construction contract. In early 2022, Highline and King County will need to negotiate an ILA to include the work.

The anticipated project cost is \$805,000; however, the full scope of the necessary work is still in development. Work is tentatively scheduled for 2022; however, King County may delay the project until the 2023 construction season. A detailed budget will be prepared prior to construction. The work will be funded by existing rates and capital reserves.



DATE:  
10/28/2021  
SCALE:  
AS SHOWN



Highline Water District  
23838 30th Ave S.  
Kent, WA 98032  
*Serving the Southwest Metropolitan Area since 1946*

# King County Lake to Sound

Sheet:  
of